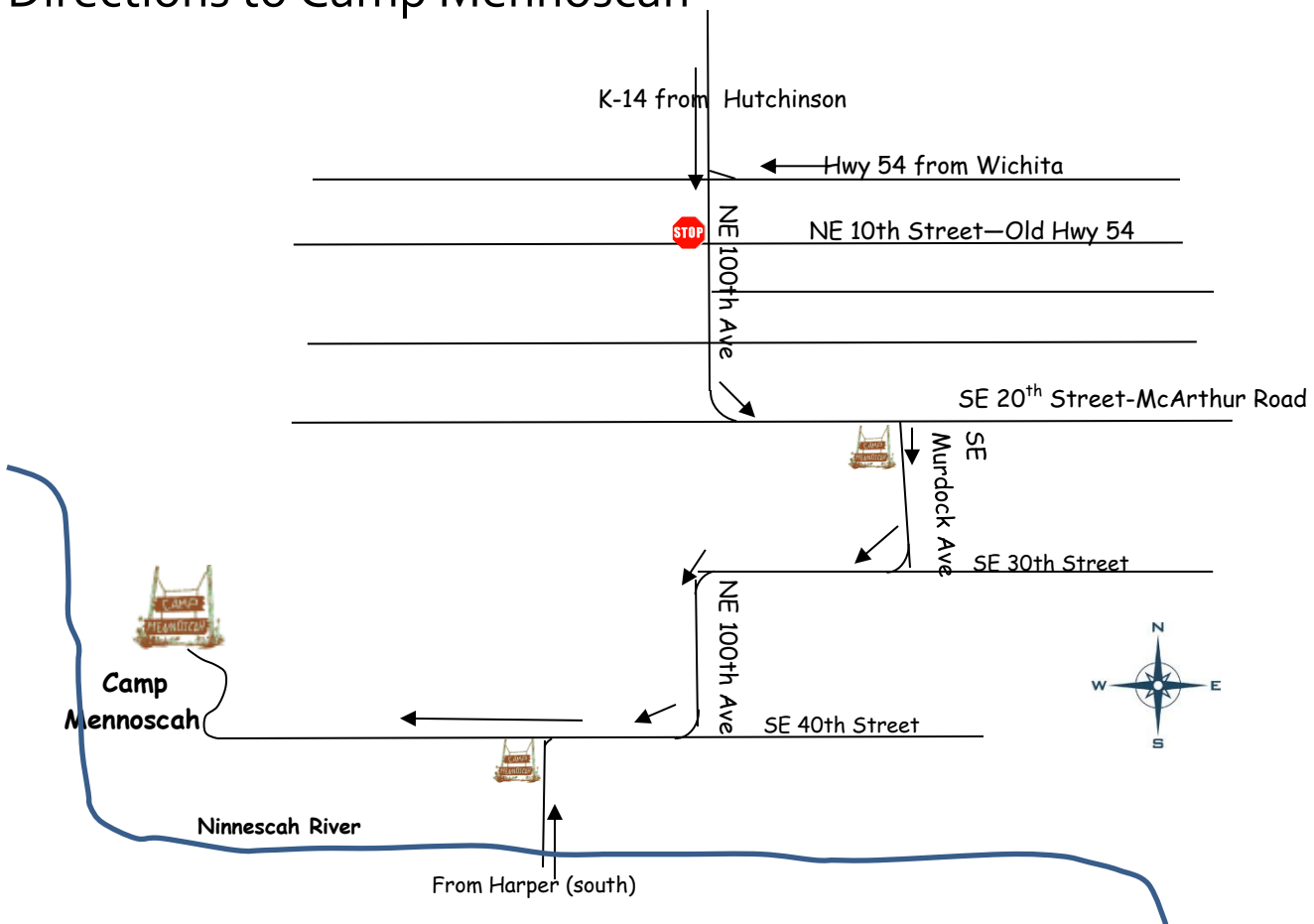


# Directions to Camp Mennoscah



**from Wichita:** Take Hwy 54 West to K-14 (Hutchinson/Murdock exit). Turn left (south); go straight (past stop sign) across Old Hwy 54. Turn right (south) onto SE Murdock at the first Camp Mennoscah sign and continue through Murdock on blacktop road until you get to the 2<sup>nd</sup> Camp Mennoscah sign. Turn off onto the dirt road and follow to camp driveway.

**from Hutchinson:** Take K-14 South about 30 miles and turn right (south) onto SE Murdock at the first Camp Mennoscah sign and continue through Murdock on blacktop road until you get to the 2<sup>nd</sup> Camp Mennoscah sign. Turn off onto the dirt road and follow to camp driveway.

**from the west/Kingman:** Take Hwy 54 East to K-14 (Hutchinson/Murdock exit). Turn right (south); go straight (past stop sign) across Old Hwy 54. Turn right (south) onto SE Murdock at the first Camp Mennoscah sign and continue through Murdock on blacktop road until you get to the 2<sup>nd</sup> Camp Mennoscah sign. Turn off onto the dirt road and follow to camp driveway.

**from the south/Harper:** Take K-14 north. Turn right (east) onto K-42. Go through Adams. Turn left (north) onto SE 100<sup>th</sup> Ave. Go approximately 9 miles. The Camp Mennoscah sign will be on the left. Turn off onto the dirt road and follow to camp driveway.

Highway K-17 (Hutchinson to Murdock) is now K-14.



**Camp Mennoscah**  
9458 SE 40th Street, PO Box 65  
Murdock, KS 67111  
620-297-3290  
[www.campmennoscah.org](http://www.campmennoscah.org)